

NOTICE TO VOTERS

FREQUENTLY ASKED QUESTIONS ABOUT MEASURE C

How are Jefferson Elementary (JESD) schools performing?

JESD serves nearly 5,000 pre-Kindergarten through 8th grade students from areas in San Mateo County — the city of Daly City, the town of Colma, unincorporated Broadmoor Village and a small section of the city of Pacifica.

Studies show having a qualified teacher in the classroom is the most important element to providing a quality education and determining the future success of students. Our District is currently struggling to recruit and retain qualified teachers to our community schools as neighboring school districts are offering higher compensation and are working to attract our most talented teachers.

How have local parcel taxes funded JESD schools and students?

For 7 years, our community has supported quality education in our elementary and middle schools with locally controlled funding that cannot be taken away by the State. This locally controlled funding has enabled the District to keep qualified teachers in the classrooms, maintain core academic programs and increase library services. However, unless replaced by voters, this funding is set to expire soon.

What is Measure C?

To continue to provide quality academics and help retain teachers, the Jefferson Elementary School District Governing Board voted to replace our expiring local parcel tax on the March 2024 ballot at \$88 per parcel per year, raising \$1.64 million dollars a year for 9 years. Without this continued source of local funding, the District would need to reduce or cut some academic programs, reading intervention teachers and library services.

What fiscal accountability provisions are required?

Measure C would have fiscal accountability, including independent citizens' oversight and mandatory annual audits to ensure funds are spent as intended. All funds would be controlled locally and could not be taken away by the State. Additionally, senior citizen homeowners will continue to be eligible for an exemption.

Would all the funds continue to stay in Jefferson Elementary School District schools?

All funds from Measure C would benefit local schools in our District only. No funds could be taken by the State or used for other purposes than supporting our schools.

Would exemptions still be available?

Yes. Senior citizen homeowners would continue to be eligible for an exemption from the cost of Measure C, as would certain residents with disabilities.

How do I find out more about the exemptions?

Homeowners over the age of 65 or anyone receiving Supplemental Security Income for a disability may obtain an exemption from the current tax by applying through the District office. To learn more about the exemption process, please visit the district website at www.jsd.k12.ca.us/District/149298-Parcel-Tax-Exemption.html

When will Measure C be on the ballot?

Measure C will be on the March 5, 2024 ballot.

How can I find out if I'm registered to vote?

You can register to vote or check your registration status at registertovote.ca.gov. The deadline to register to vote in this election is February 20th.

When will I receive my ballot?

All voters will receive a ballot in the mail the week of February 5, 2024. No postage is required. Ballots must be postmarked on or before March 5, Election Day, to be counted.

How can I learn more about voting in this election?

For more information, please contact the San Mateo County Registration & Elections Division:

 (650) 312-5222  registrar@smcacre.gov



JEFFERSON
Elementary School District

Information About Measure C

CONTINUING LOCALLY CONTROLLED FUNDING FOR OUR SCHOOLS



Dear Neighbor,

It is truly an honor to serve as your Superintendent here in Jefferson Elementary School District (JESD). I am eager to continue the success of our District this school year. JESD serves nearly 5,000 pre-Kindergarten through 8th grade students from four contiguous areas in San Mateo County—the city of Daly City, the Town of Colma, unincorporated Broadmoor Village and a small section of the city of Pacifica. Our strong academic programs and dedicated teachers and staff have helped ensure our students are prepared to be successful in high school, college and future careers.

Local Teachers Are Leaving Our Community

Studies have shown that having a qualified teacher in the classroom is the most important element to providing a quality education and determining the future success of students. Our District is currently struggling to recruit and retain qualified teachers to our community schools as neighboring school districts are offering higher compensation and are working to attract our most talented teachers. Reliable, local funding could help ensure JESD teachers don't leave for higher paying Districts.

Locally Controlled School Funding Set to Expire

For 7 years, our community has supported quality education in our elementary and middle schools with locally controlled funding that cannot be taken away by the State. This locally controlled funding has enabled the District to keep qualified teachers in the classrooms and maintain core academic programs. However, unless replaced by voters, this funding is set to expire soon.

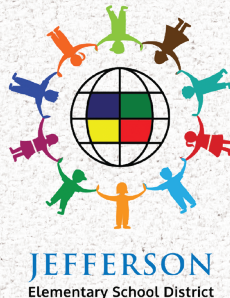
To continue to provide quality academics and help retain teachers, the JESD Governing Board voted unanimously to place Measure C on the March 5, 2024 ballot.

Planning for the future of our District is a community process. As we look to the future, we look forward to community engagement and input.

Sincerely,

Sandy Mikulik

Sandy Mikulik
Superintendent, **Jefferson Elementary School District**






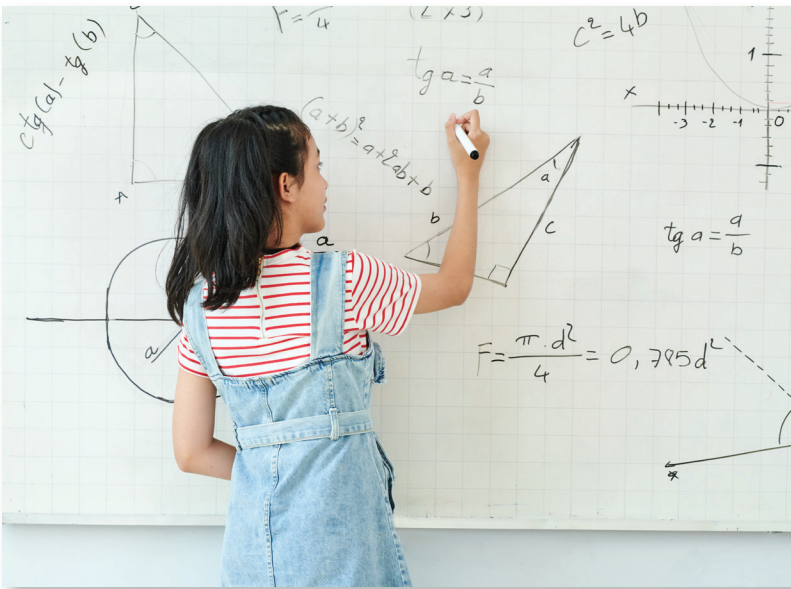
Board Votes to Place Measure C on March 5, 2024 Ballot

On November 8, the Jefferson Elementary School District (JESD) Governing Board voted to place Measure C on the March 5, 2024 ballot. If passed by local voters, Measure C would replace our expiring local parcel tax at \$88 per parcel per year, raising \$1.64 million dollars a year for 9 years.

Measure C: Local Funding to Support Quality Academics

Voter-approved parcel tax funding, which JESD voters first approved 7 years ago is set to expire. If approved by 66.7% of voters, Measure C would:

-  Attract and retain qualified teachers
-  Support students to read at grade level
-  Protect the quality of core academic subjects including reading, writing, math, science and technology



Mandatory Fiscal Accountability and Local Control

Measure C would include strict fiscal accountability requirements, including:

- ◆ All funds would be controlled locally and could not be taken away by the State
- ◆ None of Measure C could be used for administrators' salaries
- ◆ Independent citizen's oversight ensures funds are spent as voters intended
- ◆ Senior citizen homeowners would continue to be eligible for an exemption
- ◆ Measure C would expire in 9 years and could not be renewed without voter approval



Learn More! To learn more about Measure C, senior exemption forms and oversight committee reports visit, www.jsd.k12.ca.us/District/149298-Parcel-Tax-Exemption.html