

# Connecting Learning to Life

## A New Approach

Jefferson Elementary School District students are on the path! States worked with educators, business leaders, and colleges to define the skills needed for students to graduate college and be career-ready. We have shifted our focus to teaching these higher level skills, and regularly check progress to ensure our students are moving toward their learning goals. Now, with the new and better test, we will have the information we need to adjust teaching and improve learning, increasing each student's opportunity to succeed.

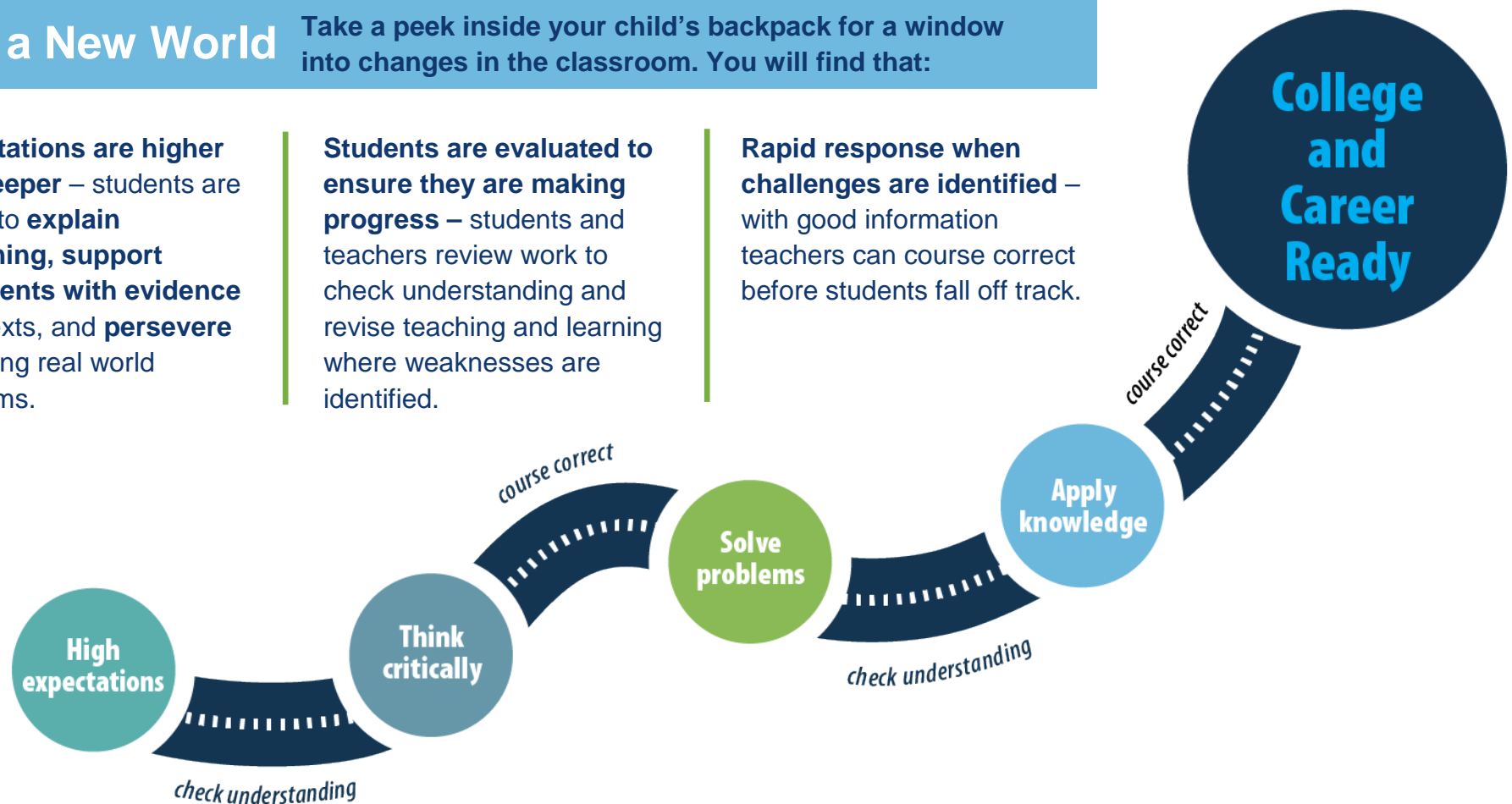
### It's a New World

Take a peek inside your child's backpack for a window into changes in the classroom. You will find that:

**Expectations are higher and deeper** – students are asked to **explain reasoning, support arguments with evidence** from texts, and **persevere** in solving real world problems.

**Students are evaluated to ensure they are making progress** – students and teachers review work to check understanding and revise teaching and learning where weaknesses are identified.

**Rapid response when challenges are identified** – with good information teachers can course correct before students fall off track.



## Out with the Old, in with the New

STAR testing is gone and the California Assessment of Student Performance and Progress (CAASPP) has taken its place.

The tests are **engaging, interactive, and uniquely accessible** with questions that require **high level thinking**, look like **real life problems**, and are **similar to classroom work**. Most important, it provides **information that informs action in the classroom**.

### Sample Mathematics Test Item: Old vs. New

Solve for  $x$ .

$$6\frac{2}{8} + 3\frac{5}{8} = x$$


(A)  $7\frac{2}{8}$   
(B)  $9\frac{7}{8}$   
(C)  $9\frac{2}{8}$   
(D)  $18\frac{7}{8}$

VS

Jared is testing how much weight a bag can hold. He plans to put juice bottles into three bags. He wants each bag to have a total weight within the given range.

- Drag juice bottles into each bag so that the weight is within the given range.
- Leave the bag empty if the given range is not possible using juice bottles.

3  $\frac{5}{8}$  lb



Between 6 lb and 7 lb      Between 10 lb and 11 lb      Between 14 lb and 15 lb

### Sample English Language Arts Test Item: Old vs. New

Which two words are synonyms for heap?

(A) pile  
(B) row  
(C) corner  
(D) mound  
(E) pattern

VS

Read the sentences from the passage.

As he neared the hollow tree he heard a growling hum. He made a **similar** noise and he saw one or two bees land on his bear suit.

What does the use of the word **similar** suggest? Pick **two** choices.

Coyote was surprised and made an unusual sound.  
 The sound Coyote made was meant to calm the bees.  
 Coyote made a sound like a bear growling to tease the bees.  
 The sound Coyote made blended in with the sound of the bees.  
 The sound Coyote made was very loud to scare away the bees.

## Tracking Progress

**It's a beginning:** The STAR test measured different skills, so the scores can't be compared. Think of this year's score as a baseline for assessing progress next year.

**It's a transition:** This isn't just a new test, it's a system of new teaching, new curriculum, & new materials. As students spend more time with the new approach, they will demonstrate greater understanding. *In these early years, results may show that many students will need to make significant progress.* But that's ok; the important thing is that we are on a path of continual improvement.

**It's useful information:** Our teachers will receive useful information for planning your child's education and you will know where support for improvement is needed.

### Achievement Levels

LEVEL 4 Exceeded the Standard

LEVEL 3 Met the Standard

LEVEL 2 Nearly Met the Standard

LEVEL 1 Has Not Met the Standard